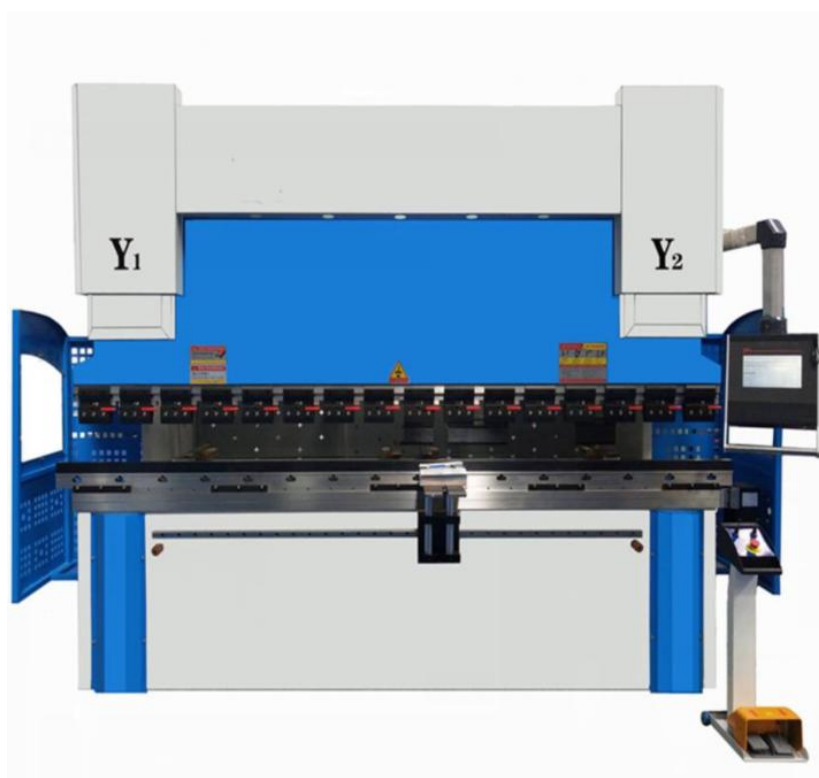
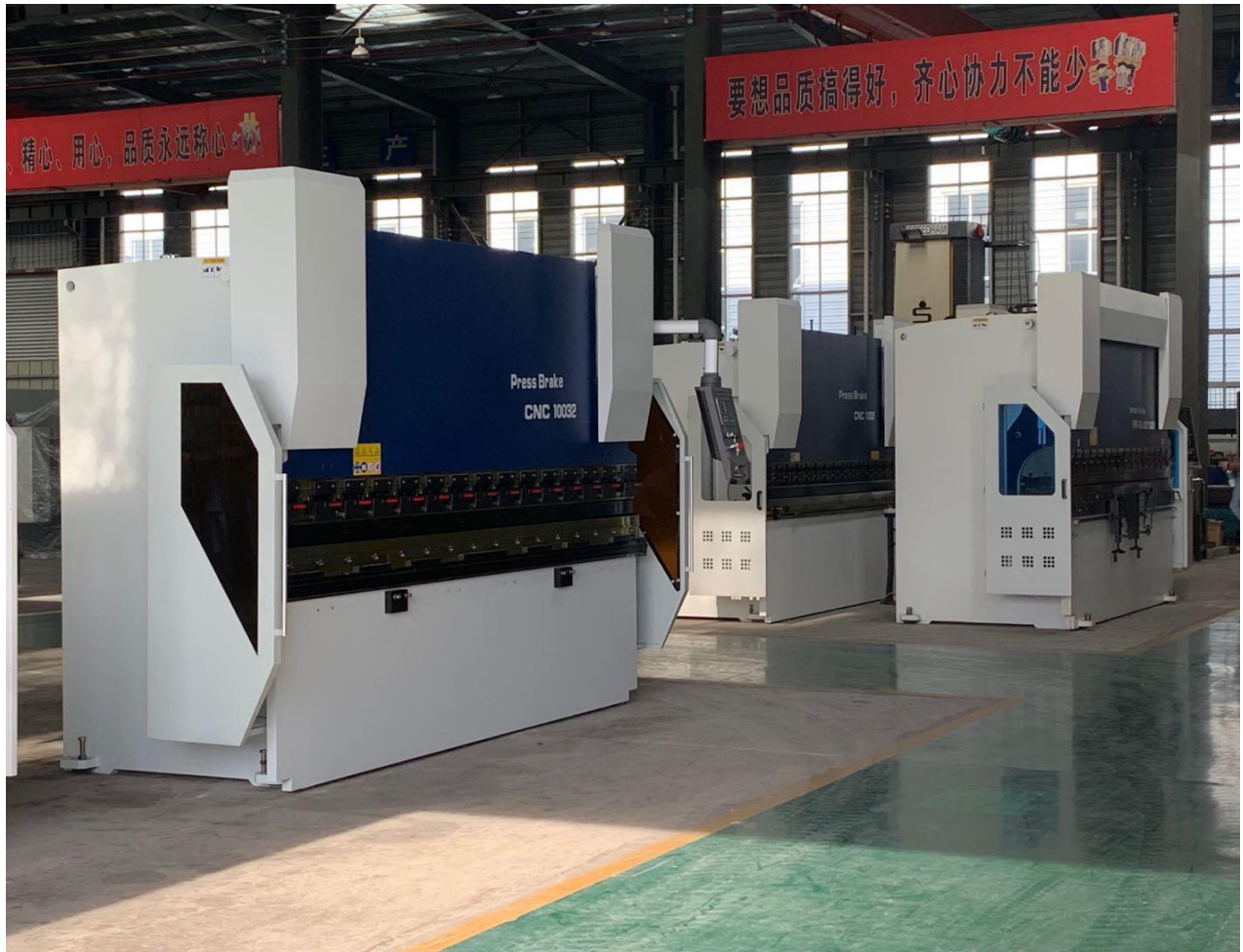


Hydraulic Press Brake WC67K-160TX2500 with E21 NC System



(THE MACHINE COLORS CAN BE CUSTOMIZED)

1. Model and Axes:

WC67K-160TX2500 (E21)

2. Working Principle and Features:

- The frame is made of steel structure, left and right vertical plate, worktable and pressure plate are welded into a whole structure. After welding, the internal stress is eliminated by tempering, so the whole steel is good and the stability is high.
- The oil cylinder has been forged, Quenched and tempered, fine grinding, hard chromium plating and other processes, and with the import of sealing ring, the phenomenon of oil leakage in customerservice.
- Integrated hydraulic system Bosch Rexroth Germany allows automatically switch to slow bends in a quickway.
- Hydraulic synchronous control and E21 programmable logic controller ensure accurate repeat-ability and ease use.
- X axis and Y axis realize accurate positioning function by frequency converter through NC E21 system programming control.
- Bending frequency response hydraulic control technology, more stable machine tools, more reliable operation.
- The best ratio of parameters, optimal core configuration ensure stable performance, more convenient operation.

- WC67k standard single-axis back gauge system and single axis bending angle system, you can choose to add the V-axis compensation function, and select the appropriate mold to bend complex shape of work pieces easily.

3. Basic Configuration:

Configuration	No	Accessory	Manufacture/Model
Standard	1	NC control system	E21
	2	Electrics	France Schneider
	3	Main motor	SIEMENS
	4	Back gauge, synchronous belt, synchronous wheel	China
	5	Frequency converter	Taiwan DELTA
	6	Sealing ring	German BAUSER and Busak+Shamban
	7	Foot switch	South Korea KACON
	8	Oil tube connector	Germany EMB
	9	Oil pump	America Sunny high performance and low noise internal gear pump
	10	Hydraulic system	Germany Bosch Rexroth
	11	Back gauge	Ball screw and linear guide rail from Taiwan
	12	Oil Cylinder	Chinese famous brand Taifeng
	13	Side and back safety guard	Jiashida
	14	Die	One set standard multi-V die
	15	Clamping	Jiashida general clamping tools

4. Introduction of Main Components:

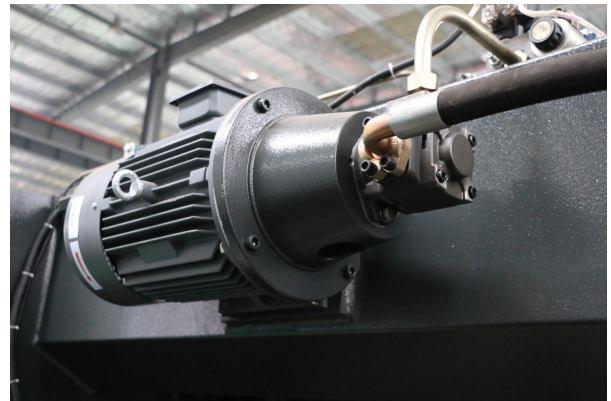
--E21 System

- Back gauge and block control
- Control for general AC motors, frequency converter
- Intelligent positioning
- Stock counter
- Holding/decompression time setting
- One side positioning
- Retract function
- One key backup/restore of parameters
- mm/inch
- Chinese/English
- Program memory of up to 40 programs Up to 25 steps per program



--Main Motor

Germany Siemens



--Electrics

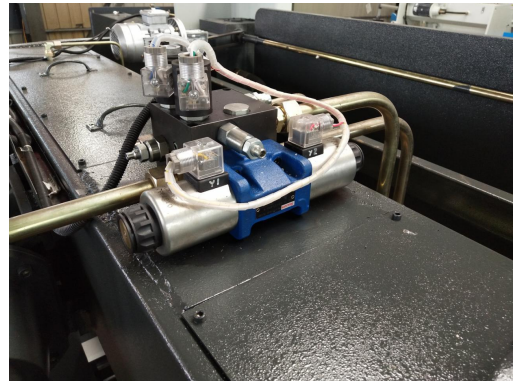
Electrical system is France Schneider
Equipped with dust proof cabinet to
guarantee the high quality electrical system



--Hydraulic Components

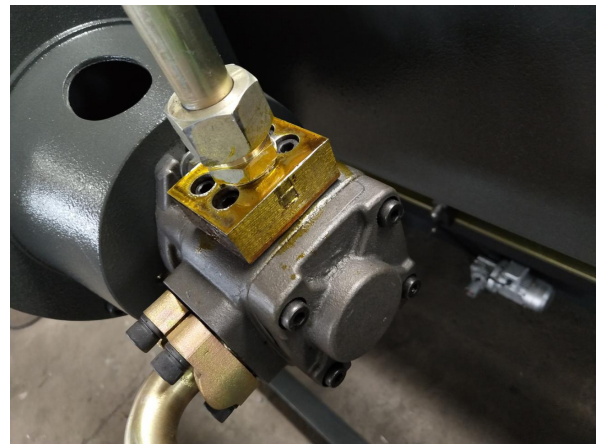
● Germany Bosch Rexroth Hydraulic Valve

Well-known brands, reliable quality
Compact structure, beautiful appearance
Convenient and quick maintenance



● America SUNNY Internal Gear Pump

Long service life, reliable performance
High efficiency
Low noise, small pressure fluctuation
Good oil absorption ability, wide range of viscosity
Compact structure, simple maintenance



● Germany EMB Tube Connector

Exquisite shape
Good tightness
Large flow, low pressure loss



● German BAUSER and Busak+Shamban Sealing Ring

Strong anti-extrusion ability to gap
Elastic seals will not twist or flip
Good leakproof performance
Good wear resistance and easy assembly



--Limit Switch

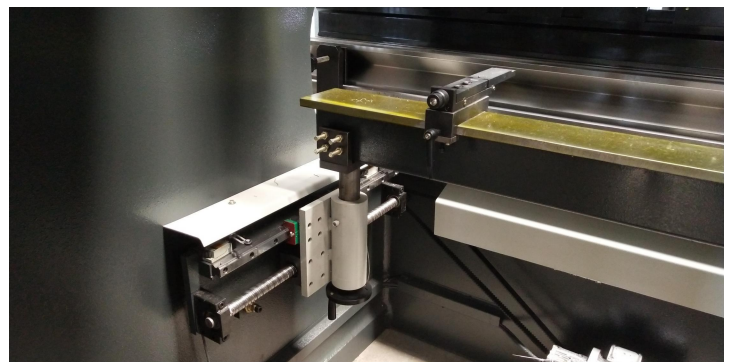


--Clamping



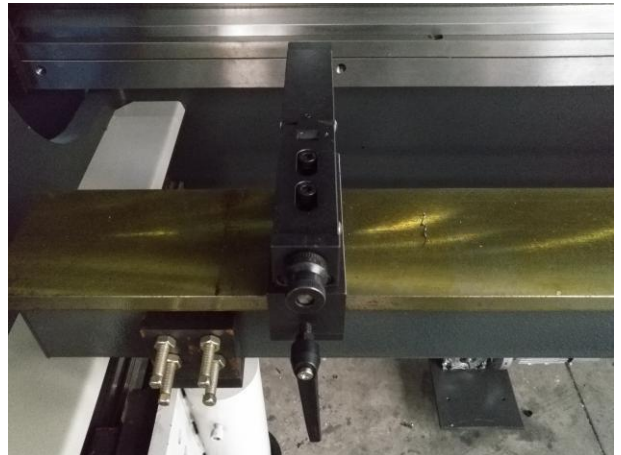
--Backgauge

- X axis
- Taiwan HIWIN Ball Screw and Liner Guide
- Good performance Step Motor



- **Finger Blocks**

Manual Adjustment Finger Blocks



- **Foot Pedal Switch**

South KACON Foot Pedal



- **One Set of Standard Tool**

Material: 42CrMo

Multi-V dies

Overall quenching process, high hardness and good wear resistance. (the tool photos are only for reference, we can also do customization)



5. Basic Parameters:

Serial No.	Name	Unit	PRESS BRAKE
1-	Nominal force	Kn	1600
2-	Max.bending Length	mm	2500
3-	Between columns	mm	1960
4-	Throat depth	mm	400
5-	Slide Stroke((Y-axis) NC - controlled stroke axes)	mm	200
6-	Max Opening Height	mm	480
7-	Y-axis Down speed	mm / sec	90
8-	Y-axis return speed	mm / sec	80
9-	X-axis Back Gauge Stroke	mm	600
10-	Work piece straightness	mm/m	0.5
11-	Backguage Accuracy	mm/m	0.05
12-	Sliding Front Arms	pcs	2
13-	Back gauge Finger Block	pcs	2
14-	Main Motor Power	kw	11
15-	CNC System	-	E21

- Opening Height: The distance between the force surface of the slide plate and the upper surface of the stand plate is the opening height of the bending machine.
- Throat Depth: The bending area by the maximum distance to the center of the mold force side vertical plate bending machine for throat depth (i.e. side plate bending area of the largest plate size)

6. Packing and Loading:



